

JAFFA Custom Acrylic Viewing Panel for Underwater Restaurant, Large Curved Transparent Window, Panoramic Display Panel for Undersea Restaurant

Our Product Introduction

Basic Information

- Minimum Order Quantity: 5set
- Price: Negotiable
- Packaging Details: Wooden box packaging, cardboard box packaging
- Delivery Time: 7-10 work days
- Payment Terms: L/C,D/P,T/T
- Supply Ability: 500sets/Year



Product Specification

- Material: PMMA
- Standard Size: Customizable
- Color: Customizable
- Feature: Luminous
- Service: OEM/ODM
- Application: Mall/Restaurant/Office/Home/Exhibition/Guardrail
- Highlight: **Underwater Viewing Window , Corrosion Resistance Underwater Viewing Window , PMMA Underwater Viewing Window**

for more products please visit us on custom-acrylicproducts.com

Description

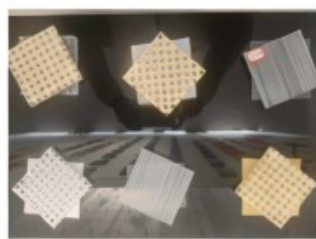
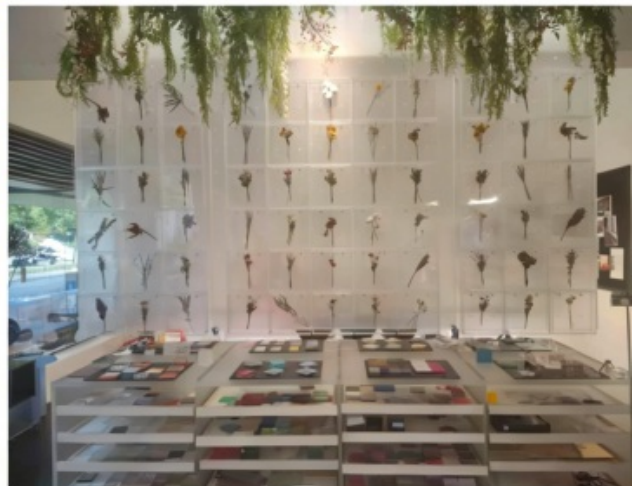
- **Immersive Undersea Viewing Design:** Adopts large curved acrylic panels to create a frameless panoramic undersea perspective, allowing diners to directly face marine ecology such as coral reefs and fish schools, which is the core landscape and selling point of high-end underwater restaurants.
- **Special High-Clarity Water Pressure-Resistant Acrylic Material:** Made of imported underwater engineering-grade acrylic with thickness 200–600mm. It has excellent seawater corrosion resistance, deep-sea water pressure resistance and long-term immersion resistance, with light transmittance over 92%, no bubbles or impurities, no yellowing for long-term use, complying with international underwater building safety standards.
- **Large-Size Hot Bending Craft:** Curved panels with single diameter up to 6m can be customized. Through high-precision hot bending and seamless splicing technology, super large viewing surface and smooth curve shape are realized, adapting to different restaurant building structures.
- **Professional Underwater Waterproof Sealing System:** Adopts marine engineering-grade sealant and structural waterproof design. The connection between acrylic and building main steel structure is treated with triple leak-proofing, resistant to deep-sea water pressure and seawater immersion, no leakage for life.
- **Ultra-Safe Load-Bearing Structure:** Acrylic panels are firmly connected to the building main body through stainless steel anchors, with multi-layer load-bearing steel beams added at the back, able to withstand deep-sea level water pressure and seismic load, complying with overseas safety codes such as ASTM/EN.
- **High-End Scenario Adaptation:** Can be used in underwater restaurants, undersea hotels, vacation villa underwater viewing platforms and other scenarios, being a core facility to create high-end immersive dining experience.
- **Eco-Friendly & Safe Craftsmanship:** Adopts CNC precision cutting + hot bending + mirror polishing, no harmful substances. The acrylic material complies with EU ROHS environmental standards, harmless to marine life and humans.



Sample fee

Prepaid sample fee

The proofing fee will be refunded for bulk orders, and will not be charged if you are not satisfied.





Parameter Item (English)	Parameter Value (Customizable)
Material	Imported Underwater Engineering-Grade Water Pressure-Resistant Acrylic + Stainless Steel Anchors + Marine Engineering-Grade Sealant
Color	High-Clarity Transparent (Customizable Light Blue/Gradient Acrylic)
Structure	Curved/Circular + Modular Assembly + Panoramic Viewing Window
Standard Size	Per Panel: Diameter 3–6m × T200–600mm (Adjustable)
Thickness	Acrylic Panel 200–600mm + Anchor/Steel Beam 50–200mm
Craftsmanship	CNC Cutting + Hot Bending + Mirror Polishing + Sealed Splicing + Waterproof Treatment
Weight Per Panel	Approx. 2000–15000 kg (Depends on Size)
Packaging	Custom Heavy-Duty Wooden Crate + Shockproof Pad + Fixed Steel Frame (Shockproof)
Installation Method	Building Embedding + Steel Structure Support + Underwater Sealed Splicing
Size Customization	Adjustable Diameter/T, MOQ: 1 Set
Form Customization	Customizable Curved/Circular/Irregular Shape
Material Customization	Customizable Acrylic Thickness/Color/Light Transmittance/UV Resistance
Function Customization	Customizable Anti-Fog/Scratch Resistance/Light Embedding
Safety Customization	Customizable Water Pressure Resistance/Seismic Grade/Fire Rating
Waterproof Customization	Viewing Window Waterproof Rating IP68 (Upgradable)



PARTICULARITY

(Customized products, subject to the effect)
 After cutting, it will affect the secondary sales.
 If there is no quality problem, we don't support returning goods.
 Thank you for your cooperation.
**If you need to return the goods, you will be charged 80%,
 and the return postage will be borne by the buyer himself.**
 I wish you a happy shopping!
 If you have any questions.
 Please contact our after-sales customer service.

We will give a **reasonable** treatment plan in time ~

About delivery

After the customer places an order, the goods will be delivered within 1-3 working days under normal circumstances.

If the quantity is large or the process is complex, the production cycle will be extended. If you have requirements for delivery time, you can contact and negotiate.

About chromatic aberration

The product pictures are all real photos, but due to shooting technology, light, display parameters and other factors.

The color of the received object will be different from the photo.

Please take the object as the standard.

About price

Because there are many specifications of raw materials, please contact customer service for quotation for other specifications.

(The link price is for the convenience of customers to place an order, not the actual price of the product)



FAQ

- 2. What scenarios is this acrylic viewing panel suitable for?** Answer: It is suitable for high-end underwater scenarios such as underwater restaurants, undersea hotels and vacation villa underwater viewing platforms, being a core landscape facility to create immersive undersea dining experience.
- 3. How durable is the acrylic viewing window in deep-sea environment? Does it meet overseas safety standards?** Answer: Made of underwater engineering-grade water pressure-resistant acrylic, it has excellent deep-sea corrosion resistance and long-term water pressure resistance. The structural design complies with overseas safety codes such as ASTM/EN/CE, with a service life of over 30 years.
- 4. What is the viewing effect and light transmittance of large curved panels?** Answer: The light transmittance is over 92%, and the mirror polishing process makes undersea scenery such as coral reefs and fish schools clearly visible. The curved design can expand the field of view, realizing panoramic viewing without dead angles, creating a "being at the bottom of the sea" dining atmosphere.
- 5. Does it support super large curved or circular customization?** Answer: Yes. Curved/circular panels with single diameter up to 6m can be customized, realizing continuous viewing surface through seamless splicing technology, adapting to different underwater restaurant building layouts.
- 6. Is installation and transportation complicated?** Answer: The modular sectional design can be disassembled for transportation, reducing logistics difficulty. It is installed on-site by a professional team for building embedding and underwater sealed splicing, with supporting waterproof construction to ensure no leakage for long-term use, and the construction period is controllable.

A dark grey rectangular graphic with the word "JAFFA" in large, white, bold, sans-serif font at the top. Below it, the phrase "THE REASON FOR OUR CHOICE" is written in a smaller, white, sans-serif font. The text is flanked by two white, L-shaped brackets that point towards the center.

ABOUT US

We are committed to providing customers with high-quality acrylic, plexiglass and resin plate products to meet the needs of various industries.

Whether it's commercial display, interior decoration, advertising logo or home design,
we can make it according to customer's requirements.
We have advanced production equipment and technical team,
which can provide a variety of different processing technologies, including cutting, grinding, bending and bonding.


Ensure the accuracy and quality of products.

We also pay attention to innovation and research and development,
and constantly introduce new products and designs to meet the needs and trends of the market.
In terms of installation, we have an experienced installation team,
which can quickly and accurately complete the installation of products to ensure customer satisfaction and use effect.
Whether it is a business customer or an individual customer,
we are committed to providing you with professional, efficient and high-quality services.
No matter what kind of products you need to customize.
We can make it according to your needs and requirements.


Ensure the quality and effect of products.



 **JAFFA Plastics (Shanghai) Co., Ltd.**

 13661474761

 jaffabrandofficial@gmail.com

 custom-acrylicproducts.com

No. 773, Furun Road, Nanhu District, Jiaxing City, Zhejiang Province